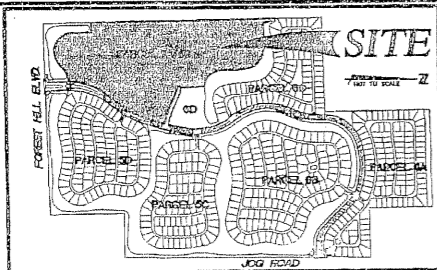
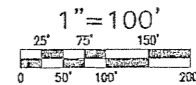


OLIVE TREE - PHASE 5B OF THE RIVER BRIDGE P.U.D.

BEING A REPLAT OF A PORTION OF PALM BEACH FARMS COMPANY PLAT NO. 3, AS RECORDED IN PLAT BOOK 2, AT PAGE 47, AS ABANDONED BY RESOLUTION R-81-1099, RECORDED IN OFFICIAL RECORD BOOK 3595, PAGES 779 THROUGH 782, INCLUSIVE, AND AS ABANDONED BY RESOLUTION R-87-319, RECORDED IN OFFICIAL RECORD BOOK 5215, PAGES 125 THROUGH 129, INCLUSIVE, ALSO A REPLAT OF TRACT I OF OLIVE TREE - PHASE 5A/6B, RECORDED IN PLAT BOOK 76, AT PAGE 102, ALL IN THE PUBLIC RECORDS OF PALM BEACH COUNTY, FLORIDA, SITUATE IN THE WEST 1/2 OF SECTION 10, TOWNSHIP 44 SOUTH, RANGE 42 EAST, CITY OF GREENACRES, PALM BEACH COUNTY, FLORIDA.

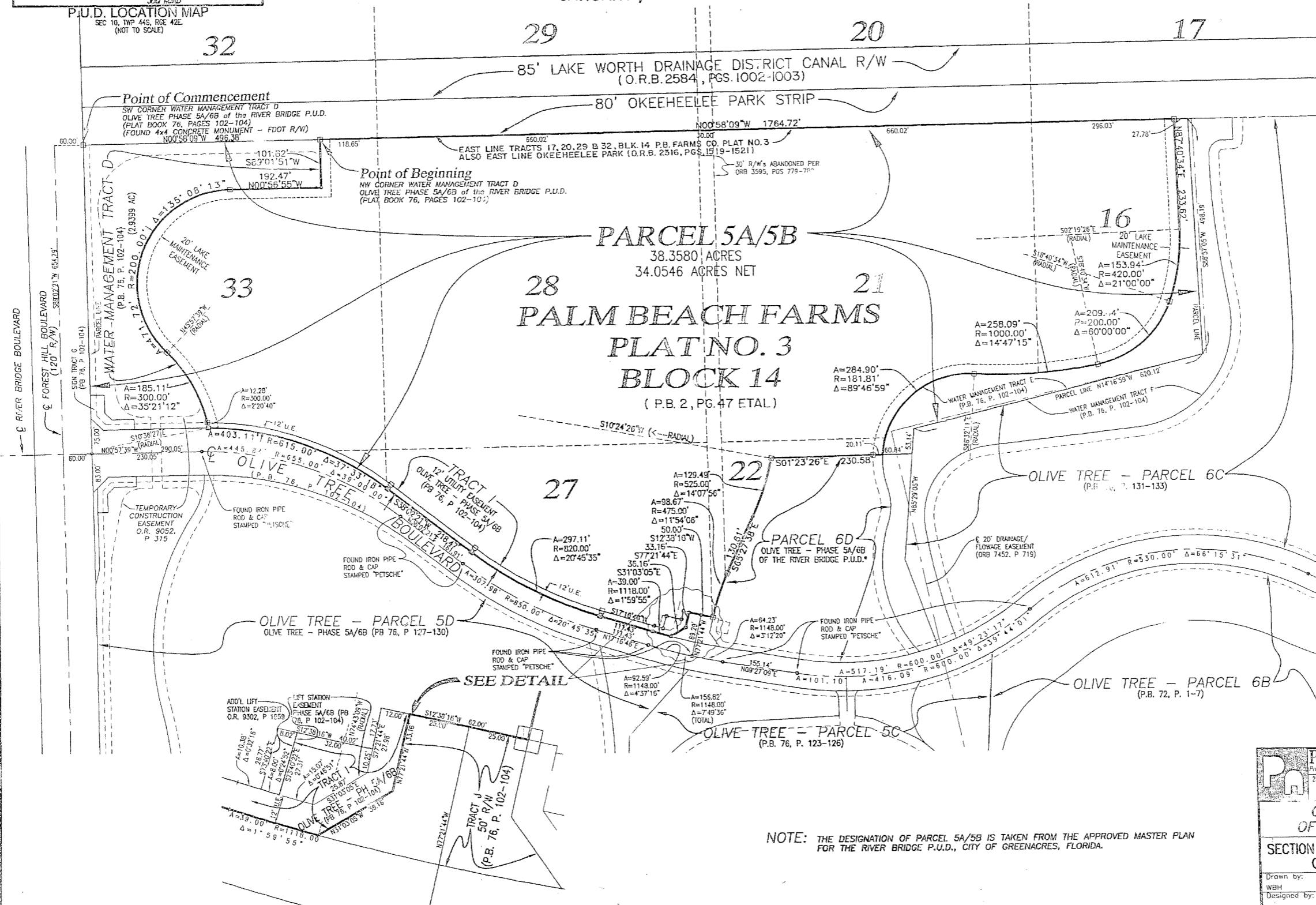
JANUARY, 1998

SHEET 2 of 2



P.U.D. LOCATION MAP
SEC 10, TWP 44S, RGE 42E
(NOT TO SCALE)

This plot was filed for record at _____, this _____ day of _____, 1997, and duly recorded in Plat Book _____ on pages _____ through _____.
DOROTHY H. WILKEN
Clerk Circuit Court
by: _____



NOTE: THE DESIGNATION OF PARCEL 5A/5B IS TAKEN FROM THE APPROVED MASTER PLAN FOR THE RIVER BRIDGE P.U.D., CITY OF GREENACRES, FLORIDA.

PETSCHÉ & ASSOCIATES, INC.
Professional Engineers - Land Surveyors - Development Consultants - Testing Services
2581 Melrose Boulevard Suite 6, West Palm Beach, Florida 33407 (407) 640-3800
6799 Overseas Highway, Suite 7, Maitland, Florida 32751 (407) 743-5789
1600 Redbud Boulevard, Suite 402, McKinney, Texas 75069 (214) 562-3600

OLIVE TREE - PHASE 5B OF THE RIVER BRIDGE P.U.D.
SECTION 10, TOWNSHIP 44 S., RANGE 42 E., CITY OF GREENACRES, FLORIDA.

Drawn by: WBH	Date: 04/21/97	SCALE: 1"=100'	JOB NUMBER: 96-018	SHEET OF: 2
Designed by: R. HAGLER	Checked by: R. HAGLER			